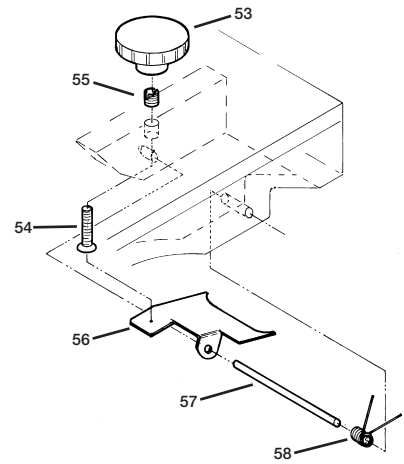
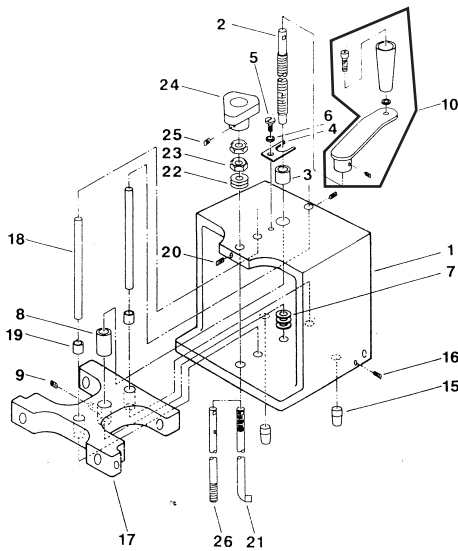
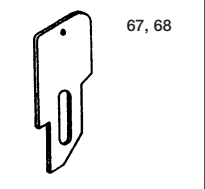
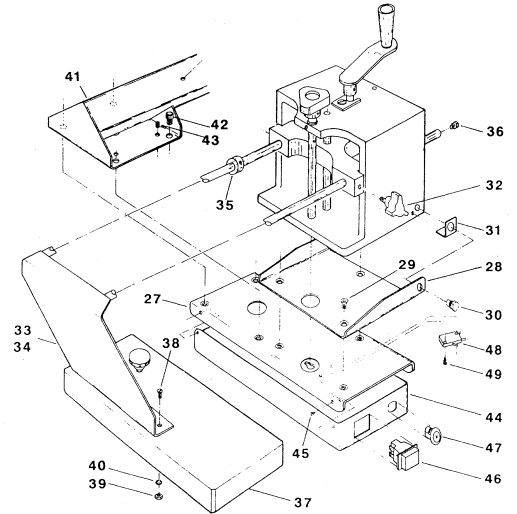
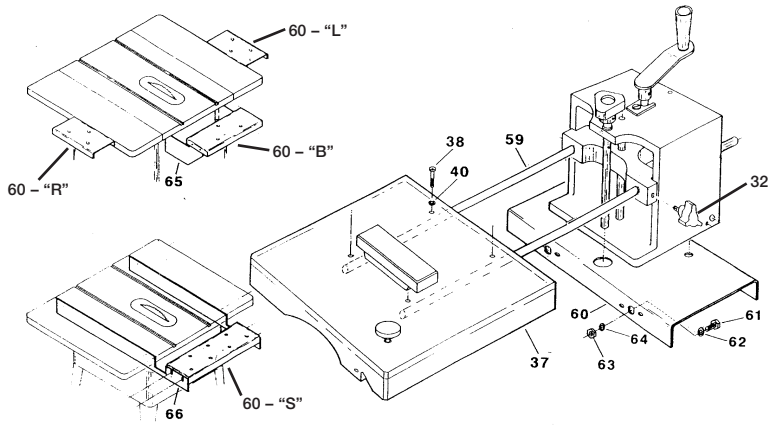
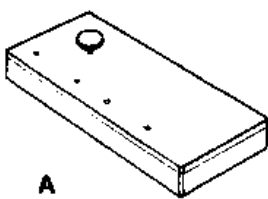


PARTS

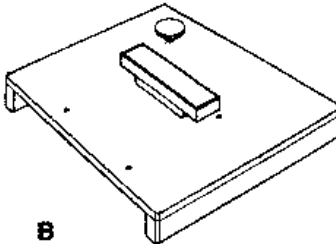


BRETT-GUARD®

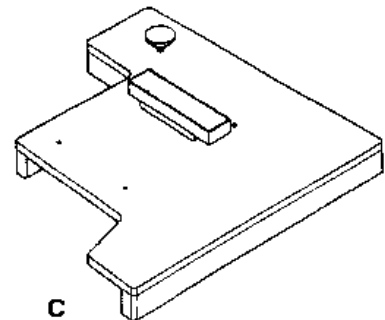
REPLACEMENT SHIELDS



A



B



C

KEY	MODEL NO.	DESCRIPTION	WEIGHT (UPS)	LIST PRICE
B	20030	Replacement 'Plexiglas' Shield for 10A Guards	6#	99.99
A	20210	Replacement 'Plexiglas' Shield for 10A-M Guards	6#	99.99
C	20031	Replacement 'Plexiglas' Shield for 12A Guards	7#	120.99
A	20231	Replacement 'Plexiglas' Shield for 12A-M Guards	7#	120.99
C	20032	Replacement 'Plexiglas' Shield for 16A Guards	8#	150.99
A	20234	Replacement 'Plexiglas' Shield for 16A-M Guards	8#	150.99

OPTIONS:
 Dust Collection Nozzle (2" dia.) on shield.
 Available on both original equipment, as well as replacement shields.
 To order, add P suffix to model number. (ie: 20030P)
P: #39.99 (20030P-\$139.98)

PARTS

BRET-GUARD®

KEY	DESCRIPTION	PART#	QTY.	LIST (each)	KEY	DESCRIPTION	PART#	QTY.	LIST (each)
*	Housing Assembly, 'Original' style, Note #1	20500	1	188.00	40	Washer, #10 Nylon	20046	2	.35
*	Housing Assembly, 'Cantilever' style, Note #2	20501	1	199.00	41	Insert, complete M-30	20202	1	46.95
1	Housing Body	20001	1	65.00		Insert, complete M-50	20306	1	46.95
2	Crank Rod, threaded	20008	1	13.80	42	Mounting Screw (5/16-18x3/4")	20047	4	.89
3	Crank Rod, Bushing, upper	20011	1	.94	43	Adjustment Screw (1/4-20x5/8")	20048	4	.69
4	Bushing Retainer Plate	20012	1	3.08	44	Interlock Box	20225	1	49.95
5	Retainer Screw (1/4-20x5/8")	20013	1	.95	45	Mounting Screw (for above) (10-24x1/2" B.H.)	20049	4	.89
6	Lock Washer	20014	1	.65	46	Push Button Stop Switch	20272	1	14.80
7	Crank Rod Spacer Washers	20016	3	.79	47	Key Switch, complete	20273	1	14.95
8	Crank Rod Bushing, threaded	20009	1	7.15	48	Interlock Switch	20274	1	27.95
9	Set Screw (for above) (1/4-20x1/4")	20017	1	1.95	49	Mounting Screw (for above) (4-40x5/8")	20050	2	.89
10	Crank, height adjusting, complete	20006	1	15.95	50	Wiring Harness (not shown)	20275	1	34.95
15	Locating Pin	20021	2	1.09	51	Ground Screw (not shown)	20049	1	.89
16	Set Screw (for above) (1/4-20x1/4")	20017	2	1.95	52	Nut (not shown)	20053	1	.69
17	Slide	20002	1	34.95	*	Kickback Assembly, complete, Note #5	20507	1	11.80
18	Guide Rod	20003	2	4.80	53	Kickback Assembly Knob	20039	1	3.10
19	Guide Rod Bushing	20004	2	1.40	54	Kickback Actuator	20054	1	1.95
20	Set Screw (for #18) (1/4-20x1/4")	20017	2	1.95	55	Kickback Threaded Insert	20038	1	.90
21	Locking Rod, 'Quick-Lock'	20227	1	31.95	56	Kickback Plate	20040	1	6.55
*	'Quick-Lock' Locking Rod Assembly, Note #3	20503		36.80	57	Kickback Shaft	20041	1	.94
22	Spacer Washers, Locking Rod	20026	3	.95	58	Kickback Spring	20042	1	.94
23	Locking Nut, Locking Rod	20033	2	1.25	59	Shield Support Rod, 24"	20025	1 pr.	17.50
24	Locking Rod Knob (incl. set screw #25)	20269	1	1.85	59	Shield Support Rod, 30"	20027	1 pr.	20.80
25	Set Screw (for above) (10-32x3/8")	20018	1	.79	60	"L/R" Mounting Plate, 6"x12"x1-1/4", channel, drilled	20055	1	39.30
26	Locking Rod, threaded	20015	1	32.95	60	"B" Mounting Plate, 6"x15"x1-1/4", box, rear, drilled	20066	1	41.29
*	Threaded Locking Rod Assembly, Note #4	20502	1	7.90	60	"S" Mounting Plate, 6"x__x1-1/4", overhead	20071	1	consult factory
27	"M" Mounting Plate, 6" x 12" x .75"	20203	1	52.00	61	Mounting Bolt (for above) (3/8-16x1") hex		2	1.29
28	Cradle	20207	1	49.80	62	Flat Washer, 3/8"		2	.69
29	Mounting Bolt (for above) (5/16-18x3/4" F.H.)	20010	3	1.89	63	Nut (3/8-16 hex)		2	.89
30	Pivot Pin	20271	2	3.95	64	Lock Washer (3/8")		2	.79
31	Stop Angle	20226	2	2.69	65	Brackets & hardware for mtg. #20066 to cab't. type saws	20075	1 pr.	46.85
32	Lock Knob, shield adjusting rod	G-102	2	1.24	66	Support Arms & hdwe. for mtg. Rear Box Plates to open type saws	20076	1 pr.	46.85
33	Shield Support Rods (M-Series)	25114	1	29.50	67	Splitter	20005	1	10.75
34	Shield Support	25115	1	19.80	68	Splitter, "Thin-Kerf"	20284	1	11.75
35	Stop Collar	20270	1	2.80	69	C-Frame 50" (Standard M-50)	20201	1	129.99
36	Retention Bolt (5/16-18x1/2" hex washer hd.)	20043	1	.89	70	C-Frame (Standard 30")	20216	1	129.99
37	Shield, clear, complete (Repl. Shields pg. 30)	-----	1						
38	Mounting Screw (10-32x1")	20044	2	.75					
39	'Esna' Nut (10-32)	20045	2	.69					

Note #1: Consists of #1 thru #20 and lock rod #21 or #26
 Note #2: Consists of #1 thru #14 and #17 thru #25

Note #3: Consists of #21 thru #25
 Note #4: Consists of #24 thru #26

Note #5: Consists of #53 thru #58

LABELS

Description	Key	Part No.	List
"Safety Instructions"	AA	20255	4.80
"Contact Workpiece"	BB	20256	1.95
"Lockout"	CC	20257	3.20
"Caution"	DD	20258	4.80
"Anti-Kickback"	EE	20259	1.80
"Fingers Below Shield"	FF	20260	3.20

SAFETY INSTRUCTIONS

1. Do not adjust machine or guard while blade is rotating.
2. Position shield to cover blade and rest on workpiece.
3. Adjust anti-kickback device.
4. Splitter must be in place for ripping.
5. Do not operate with damaged parts. Replace immediately.
6. Wear proper eye protection.

91-011-2

AA

For your own safety and best results read instruction manuals before operating.

CAUTION

TABLE SAWS ARE VERY DANGEROUS.

- Use only with guard in place and properly adjusted.
- Never adjust guard while saw is running.
- Never allow hand under edge of shield.
- Always wear proper eye protection.

Form No. B-0106

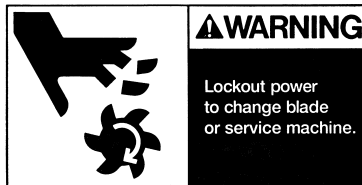
DD



BB



EE



CC



FF